



# RISING TIDE

THE MAGAZINE for  
YOUNG ANGLERS &  
CONSERVATIONISTS.

Do You Know  
This Famous  
Country Music Star  
Conservationist?

Tracking  
Texas  
Sharks!



## SHEEPSHEAD

Learn more about this  
toothy bait-stealer.





# **RIISING TIDE**

THE MAGAZINE for YOUNG ANGLERS and CONSERVATIONISTS.

Coastal Conservation Association (CCA) is a non-profit marine resource conservation organization. It has been active in almost every national fisheries debate for decades and has been a driving force in state and federal fisheries management issues. With your continued support, CCA will continue to battle for the health and longevity of our coastal fisheries and for recreational anglers' interests in them.

**Editor and Designer** Heather Peterek

**Consulting Editors** Patrick Murray  
Ted Venker

This publication is sponsored by  
Valero Energy Company



## What's Inside:

### Tracking Texas Sharks

Two hammerheads and a tiger shark are swimming in the Gulf near Texas - and you can track them online!

4

### Meet the Sheepshead

Learn all about this striped fish with a funny set of chompers.

6

### Activities and Games

Test your skills and solve fun puzzles!

8

### Kids Fishin' Photos

Kids from all over the nation show off their trophies.

10

## On the Cover:



Ten year old Abe Doxey is an experienced angler from Diamondhead, Mississippi.

During this fishing trip he was a few miles outside Bayou Caddy fishing on an oyster bed with live shrimp. On one of his first casts he hooked this monster 10 pound sheepshead.

This fish won Abe a brand new Carolina Skiff in the Mississippi STAR tournament. A catch of a lifetime!



# THIS COUNTRY MUSIC SUPERSTAR IS A CONSERVATIONIST!

## Kenny Chesney Visits First CCA Reefs in St. John River, Florida

*Funds for the Two Reefs Were Raised Through a Partnership Between the Country Star and Costa Sunglasses*

**K**enny Chesney got to do something very special before his sold-out Florida Country Superfest show June 14: the East Tennessee songwriter/superstar visited the first two No Shoes Reefs in Jacksonville's St. John River. Named the Coastal Conservation Association and George Holt Reefs, the man-made reefs – designed to promote quality of aquatic life – were built through the support of Chesney's ongoing partnership with Costa Del Mar Sunglasses and The Coastal Conservation Association/Building Conservation Trust.

"It's so easy to take the oceans and waterways for granted," Chesney says. "What they were able to create here says a lot about the ways man can live not just in harmony, but supporting our natural aquatic resources. Beyond clean water, it is about supporting healthy marine life... and that includes being aware of the impact of erosion under the water."

"Looking at the underwater sonar, it's amazing," Chesney marvels. "In only 18 months, these reefs aren't just alive, they're thriving with life. As a guy who has so many of my happiest memories on the water, I couldn't be happier to be a part of creating something like this in partnership with the

City of Jacksonville, the people at the Coastal Conservation Association and the sales of my line of sunglasses with Costa Del Mar.

All these teams came together to do something really good for the world, and I love the idea that now two reefs are working to help strengthen the health of the river. When you protect that, you insure the survival of something integral for our survival, as well as nurturing an ideal habitat for marine life. I'm blown away by how this has grown."

Easily accessible by boats, the reefs provide a much-needed habitat and improved fishing in this section of the river, which is approximately 20 miles inland from the Atlantic. Drawing inspiration from life on the water, the 8-time Academy of Country Music/Country Music Association Entertainer of the Year hopes to insure the future of the oceans and beaches for generations to come.

**THIRTEEN-HUNDRED TONS OF CONCRETE WAS USED TO CREATE THE TWO REEFS IN ST. JOHN RIVER, FLORIDA. IN TOTAL, 18 BARGE LOADS WERE NEEDED TO CARRY THE MATERIAL TO THE TWO DESIGNATED REEF SITES. EACH REEF MEASURES 200 FEET X 200 FEET AND WERE BUILT IN A TWO-WEEK TIME FRAME.**



**OCEARCH**.ORG  
EDUCATE INSPIRE ENABLE

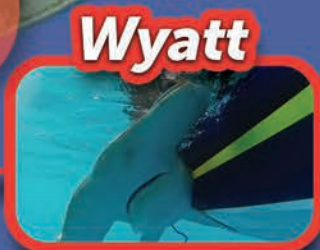


TEXAS A&M  
UNIVERSITY  
CORPUS CHRISTI  
**HARTE**  
RESEARCH INSTITUTE  
FOR GULF OF MEXICO STUDIES

## TRACKING TEXAS SHARKS



**Madeline**



**Wyatt**



**Einstein**

**M** Meet the three Texas superstar sharks making their way through the Gulf of Mexico - Madeline, Wyatt and Einstein!

The sharks were tagged last year off Port Aransas, Texas, by the Harte Research Institute's Center for Sportfish Science and Conservation at Texas A&M University-Corpus Christi through a grant from the Texas State Aquarium.

These taggings were performed through a partnership with OCEARCH's Global Shark Tracker Network. OCEARCH is a nonprofit organization which has been researching great white sharks and other large predators for years. They have successfully tagged and tracked more than 100 sharks worldwide.

The team has also partnered with the Texas State Aquarium. The TSA is a major funder of this project with ultimate plans to showcase these sharks and tracks in a new exhibit at the aquarium. They also extend this work into school classrooms over video links for students to enjoy remotely.

The type of tags used are called *Smart Position and Temperature (SPOT) tags*. SPOT Tags are one of the most advanced technology tags used by researchers. They are designed to alert researchers each time the shark's fin breaks the surface. The data from the tags gives the teams of scientists the sharks' migration patterns, biology, health and habitat. All of this gathered information is used to promote conservation and to protect their future while enhancing public safety and education.

OCEARCH shares tracking data on each shark in near-real time for free through its online Global Shark Tracker at [www.ocearch.org/#SharkTracker](http://www.ocearch.org/#SharkTracker).

"It was great," Megan Robillard said of being part of the group tagging Wyatt, Madeline and Einstein.

Robillard is the fisheries program manager with the Harte Research Institute's Center for Sportfish Science and Conservation at Texas A&M University-Corpus Christi.

"These animals are fascinating," she said, "and we don't know a lot of information about them. As with most sharks, they are in decline, and we're obviously very concerned about their habitat and their movement."

"This technology through OCEARCH and tags really help us figure out where they are moving on a daily basis. It's very powerful technology," Robillard said.

Madeline, Wyatt and Einstein have been consistently pingging since their taggings. It's been very exciting for all the scientists and researchers involved and even more exciting for all of us to be able to enjoy as well!





## EINSTEIN

**SPECIES:** Hammerhead (Sphyrna)  
**GENDER:** Male  
**STAGE OF LIFE:** Mature  
**LENGTH:** 7.5 feet  
**WEIGHT:** 118 pounds  
**TAG DATE:** June 02, 2015  
**TAG LOCATION:** Port Aransas, TX  
**TOTAL TRAVEL:** 1,127 miles

**DESCRIPTION:** Einstein is a mature-size male scalloped hammerhead shark tagged by scientists at the Harte Research Institute's Center for Sportfish Science and Conservation at Texas A&M University – Corpus Christi. Einstein was named by Debbie and Sam Isaacs, in honor of the famous scientist Albert Einstein. Einstein was tagged near an oil and gas platform off the Texas coast. Generally, there is much scientific concern about the global status of these hammerhead populations given their declining numbers.



## MADELINE

**SPECIES:** Tiger (Galeocerdo cuvier)  
**GENDER:** Female  
**STAGE OF LIFE:** Undetermined  
**LENGTH:** 9.3 feet  
**WEIGHT:** 294 pounds  
**TAG DATE:** August 14, 2014  
**TAG LOCATION:** Port Aransas, TX  
**TOTAL TRAVEL:** 3,841 miles

**DESCRIPTION:** Madeline is a female tiger shark tagged by scientists at the Harte Research Institute's Center for Sportfish Science and Conservation at Texas A&M University – Corpus Christi. Madeline, meaning "little girl," is named after Madeline Stunz - a five year old future veterinarian wanting to specialize in the care of sharks. Madeline (the shark) was tagged near an oil and gas platform off the Texas coast.



## WYATT

**SPECIES:** Hammerhead (Sphyrna)  
**GENDER:** Male  
**STAGE OF LIFE:** Mature  
**LENGTH:** 7.2 feet  
**WEIGHT:** 102 pounds  
**TAG DATE:** July 14, 2014  
**TAG LOCATION:** Port Aransas, TX  
**TOTAL TRAVEL:** 5,818 miles

**DESCRIPTION:** Wyatt is a mature-size male scalloped hammerhead shark tagged by scientists at the Harte Research Institute's Center for Sportfish Science and Conservation at Texas A&M University – Corpus Christi. Wyatt meaning "brave and strong" is named after Wyatt Montgomery of Houston, Texas. Wyatt (the human) is a young shark enthusiast who has been intrigued with sharks since a very young age. Wyatt (the shark) was tagged near an oil and gas platform off the Texas coast.

### SPOT Satellite Tag



**Tracking sharks like these three will inform scientists about migration patterns and habitat use that will promote conservation of these important apex predators.**



# SHEEPS HEAD

## ARCHOSARGUS PROBATOCEPHALUS

*Other Names:*

*Sheephead, Convict Fish, Bait-Stealer*

**The species name, *probatoccephalus*, translates as a sheep's head, which they supposedly resemble.**



### **BODY**

It's an easy fish to identify, with large, oval-shaped body boldly marked with 5-7 wide, grayish-black vertical stripes set on a light gray or white background. They are sometimes called convict fish for this pattern on their body, resembling a prisoner's black and white striped uniform. The dorsal and anal fins have large, very sharp spines.

### **TEETH**

Any confusion on fish species can be set aside by inspecting the teeth, which look a great deal like human (or sheep) incisors. They use these funny-looking chompers to crush heavily armored and shelled prey and to scrape barnacles from rocks and pilings.

### **DIET**

Sheepshead pretty much eat everything. A Louisiana study showed that by volume, 54% of their diet was plants, 19% mussels, 10% sponges, 8% clams, 3% croakers and other fish, and almost 2% mud crabs. Barnacles and blue crabs made up less than 1% each of their diet.

### **HABITAT**

Sheepshead are found in Gulf state waters from West Florida to Texas. The Sheepshead's primary habitat is inshore around pilings, rock jetties, piers, mangrove roots, as well as in tidal creeks. It seeks out warmer spots near spring outlets and river discharges and sometimes enters freshwater during the winter months.





Sheepshead are sometimes called **convict fish** for the pattern on their body, resembling a prisoner's black and white striped uniform.



**SMALL**



**AVERAGE**

Sheepshead are not large fish. Adults most commonly weigh between 1-8 pounds and are between 14-18 inches long. A 5-pounder is a big one, and a 10-pounder is a giant. Maximum size is generally about 22 pounds and 30 inches long. At 2 years of age, it is typically considered an adult. Sheepshead have been recorded as old as 20 years.



**BIG**

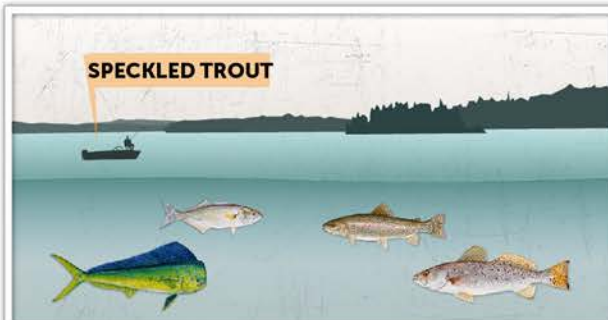
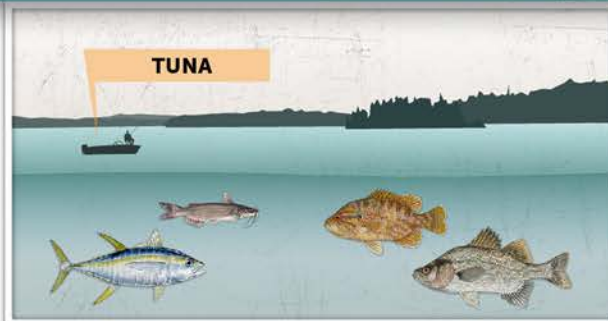


**GIANT**



# FISHMATCH

Match the name of the fish the boater is fishing for to the matching fish underneath the water.



You can play more of this game online at [TakeMeFishing.org](http://TakeMeFishing.org).



**TAKE ME FISHING™**  
takemefishing.org

PLUS check out these other four fun fishing games. Fishing fun doesn't just happen on the water...play fishing games while learning about fish species, fish habitats and much more.



**Hatchery Matchery**  
Use your memory to match them up to win this fun fishing game.



**Fish Hangman**  
Can you guess the right word? Click the missing letters to create the word.



**Fishfinder Pro**  
How many fish can you catch? Test your casting skill and catch as many as you can!



**Create-A-Fish**  
What has the nose of a marlin, fins of a trout, and body of a snapper? It's your next fish!



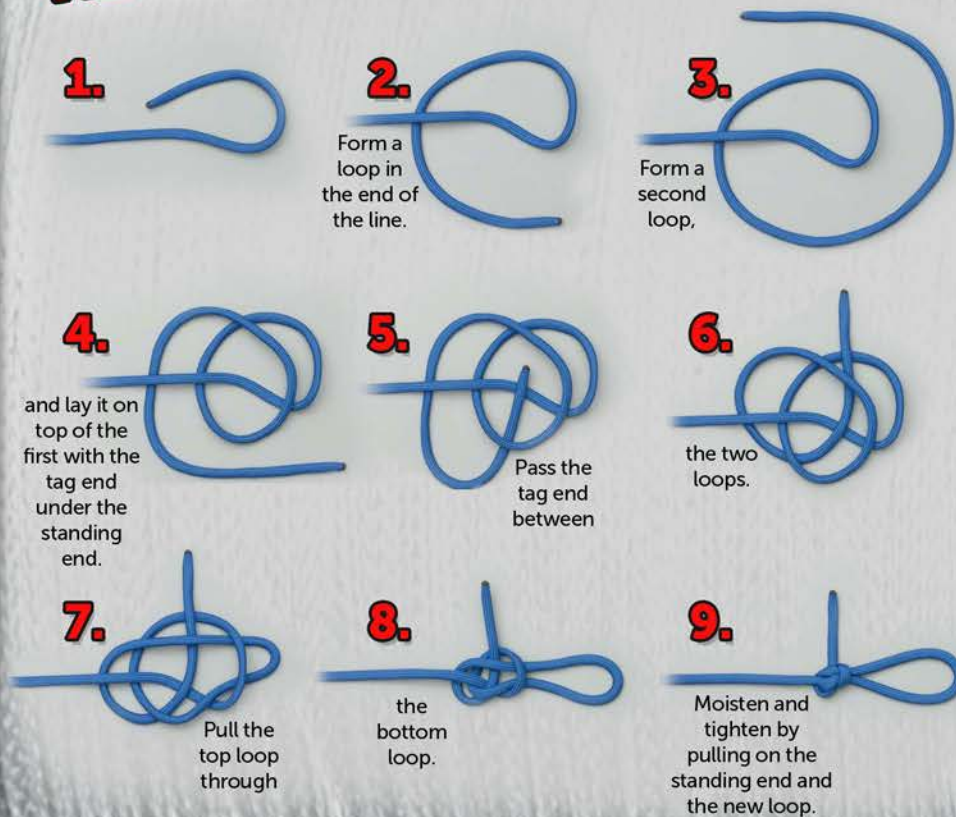
# PERFECTION (ANGLER'S) LOOP KNOT

## Tie this!

**Uses:** It is the easiest way to make a small loop in the end of a leader or tippet that will lie perfectly in line with the standing end. It is commonly used to join a Perfection Loop in the end of a fly line to a Perfection loop in a Leader using a "Loop to Loop" connection.

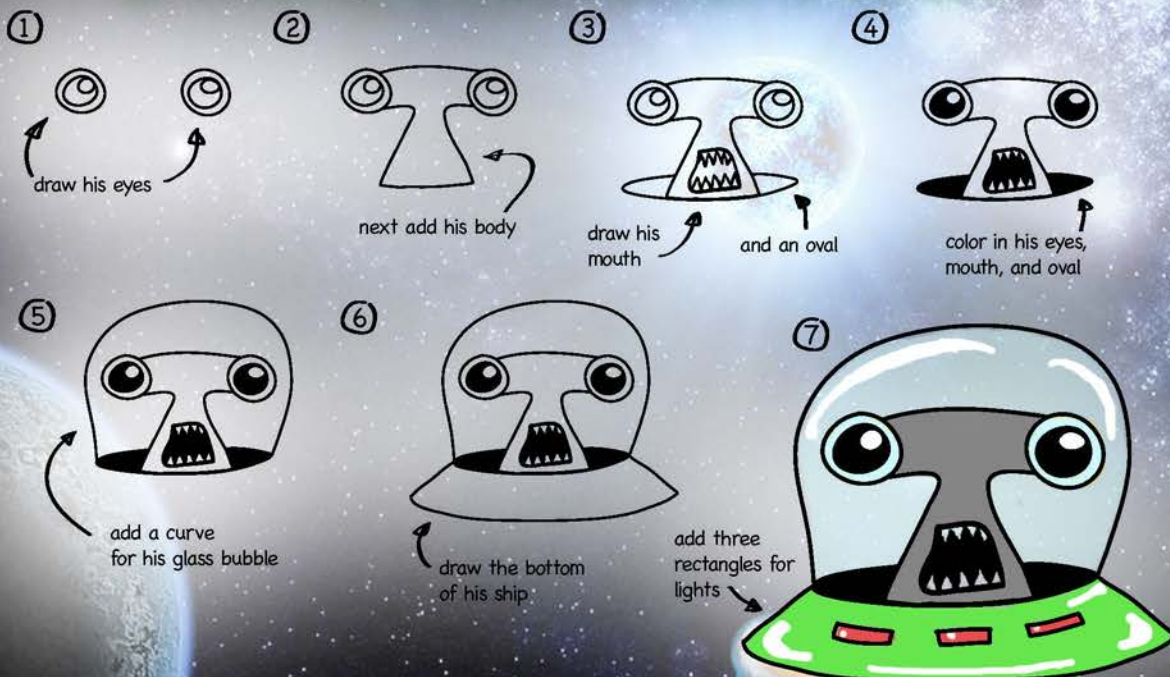
**Tying it:** This knot is most easily tied in the hand. Hold the first loop between finger and thumb. Wrap the second turn round the finger and thumb and then between the two loops. Tuck the second turn through the first, checking that the loop crosses and traps the end.

**Advantages:** The Perfection loop creates a stable loop that lines up neatly with the standing end. Using a "Loop to Loop" connection the Perfection Knot allows for quick and convenient leader changes.



## Draw this!

# Alien Hammerhead





# KIDS FISHIN'

DO YOU HAVE A GREAT CATCH THAT COULD MAKE OUR KIDS FISHIN' PAGE?

To submit photos, have your parents:

1. Email to [photos@joincca.org](mailto:photos@joincca.org) OR
2. Share on Facebook at [Facebook.com/CCANational](https://www.facebook.com/CCANational)

\* There are a lot of kids fishin' out there and while we try our best to get everyone's photo published, we cannot guarantee yours will be printed.



Mallory



Ty



Amelia



Ada



Javier

Nolan

Joaquin



William



Brody



Flora



Davis



Caden



William





Taten



Kasen



Joe



Annette



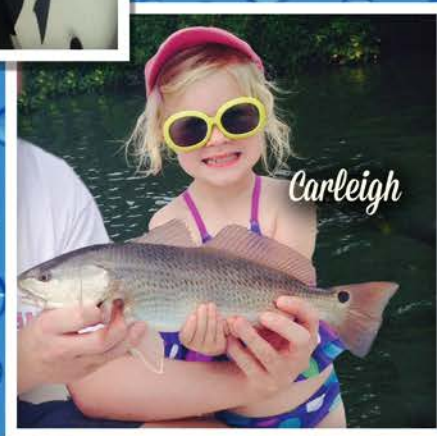
Garner



Jack



Kate



Carleigh



Fourdam



Mason



Karson



**Thank you  
Valero!**

CCA & Valero Continue  
Youth Partnership

Because of the generous support of Valero,  
the Rising Tide Youth Program will  
continue to thrive!


"Since the 2007 launch of the Rising Tide Youth Program, more children than ever are participating in community projects, local and statewide tournaments and in the conservation of coastal resources," said Patrick Murray, president of CCA. "But, there is still work to do, and Valero's generous sponsorship will allow us to continue focusing on the future of marine conservation through our youth programs."





**CONSERVATION & PROTECTION OF MARINE LIFE**  
6919 Portwest Drive, Suite 100 | Houston, Texas 77024  
p 713.626.4234 | f 713.626.5852 | [www.joincca.org](http://www.joincca.org)

NON PROFIT  
U.S. POSTAGE  
PAID  
HOUSTON, TEXAS  
PERMIT 2532



**VALERO®**

# Learn the A-B-Seas of Conservation!

At Valero, we're proud to be America's largest refiner, producing everything from gasoline to jet fuel. But we're also one of the nation's most environmentally responsible refiners, too. We think the Coastal area is one of the most important regions in the United States, and we want to help keep it that way. That's why we are proud to sponsor the Rising Tide newsletter. Inside, you'll find lots of interesting information, and you'll discover the fascinating world underwater.

We hope that with what you learn, you will grow up just as determined as we are to help protect one of our most valuable natural resources: the Coastal area of our United States.

